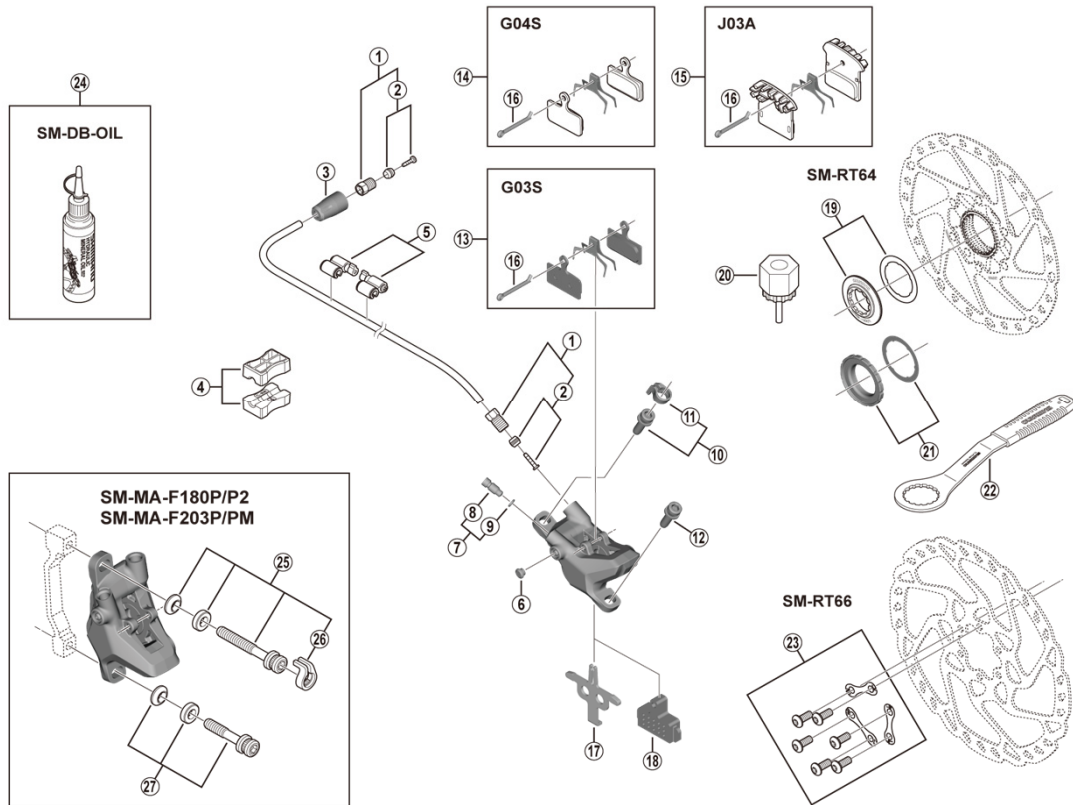


DEORE Disc Brake
BR-M6100 Brake Caliper
SM-BH90-SS Brake Hose

SM-RT64 Disc Rotor/Center Lock
SM-RT66 Disc Rotor/6-Bolt



ITEM NO.	SHIMANO CODE NO.	DESCRIPTION	INTERCHANGEABILITY	
			BR-M7100	SM-RT70
1	Y8JA98010	Flare nut unit	A	
2	Y8JA98020	Olive and connector insert	A	
3	Y8WM14000	Cover	A	
4	Y8H198030	TL-BH61 Shimano original tool (2 pcs.)	A	
5	Y83098040	SM-HANG Hose supporter A and B	A	
6	Y88F06000	Bleed boss cap		
7	Y8LS98030	Bleed screw and O-ring		
8	Y8VZ07000	Bleed screw		
9	Y8B511001	O-ring		
10	Y2F398020	Caliper fixing screw (M6 x 18.7) and snap ring	A	
11	Y2RT06000	Snap ring	A	
12	Y8C509020	Caliper fixing screw (M6 x 18.7)	A	
13	Y8WW98030	G03S Resin pad and spring with split pin		
14	Y8MY98010	G04S Metal pad and spring with split pin		
15	Y8Z298010	J03A Resin pad with fin and spring with split pin		
16	Y8DB06100	Split pin		
* 17	Y8PE03000	Pad spacer		
18	Y8J712100	Bleeding spacer	B	
19	Y8KU98010	Lock ring (black) and washer		B
20	Y12009230	TL-LR15 Lock ring removal tool		A
21	Y24698030	Lock ring and washer (external spline type)		A
22	Y13098000	TL-FC36 Lock ring removal tool		A
23	Y8KT98010	Rotor fixing screw and lock washer		
24	Y83998020	Mineral oil (100 ml)	A	
	Y83998030	Mineral oil (500 ml)	A	
25	Y2RT98020	Caliper fixing screw unit (M6 x 37.9) for SM-MA-F180P/P2	A	
	Y2RT98030	Caliper fixing screw unit (M6 x 40.2) for SM-MA-F203P/PM	A	
26	Y2RT07000	Snap ring	A	
27	Y8G498030	Caliper fixing screw unit (M6 x 32.1) for SM-MA-F180P/P2	A	
	Y8J498020	Caliper fixing screw unit (M6 x 34.4) for SM-MA-F203P/PM	A	

A: Same parts.

B: Parts are usable, but differ in materials, appearance, finish, size, etc.

Absence of mark indicates non-interchangeability.

Specifications are subject to change without notice.

Nov.-2020-4661B

© Shimano Inc. I

SHIMANO